

Max M. Fisher
College of Business

Graduate Programs



THE OHIO STATE
UNIVERSITY

FISHER COLLEGE
OF BUSINESS

The Ohio State University Max M. Fisher College of Business

Fisher provides tomorrow's business leaders with the foundation needed to succeed.

Fisher students experience an academically rigorous learning environment led by world-class faculty that fosters the development of principled leaders who possess an entrepreneurial spirit, a strong sense of social responsibility and global awareness.

Working Professional MBA

U.S. News & World Report, 2025-2026

#1
in Ohio

#5
among public universities

#8
overall

Online Working Professional MBA

U.S. News & World Report, 2025-2026

4
specialties ranked in the top 15

BUSINESS ANALYTICS
FINANCE
GENERAL MANAGEMENT
MARKETING

Full-Time MBA

U.S. News & World Report, 2025-2026

#8
among public universities

#24
overall

Specialized Master in Business - Analytics

U.S. News & World Report, 2025-2026

#5
best online master's business programs (non-MBA)

#3
best online master's business programs for veterans (non-MBA)

Graduate Programs Specialties

U.S. News & World Report, 2025-2026

ACCOUNTING		FINANCE	
#7 among public universities	#27 overall	#6 among public universities	#28 overall
SUPPLY CHAIN		PRODUCTION/OPERATIONS	
#3 among public universities	#4 overall	#7 among public universities	#12 overall

U.S. News & World Report, 2024-2025

MANAGEMENT	
#15 among public universities	#31 overall
MARKETING	
#6 among public universities	#23 overall



How do you define innovation? Is it a new and better way of thinking or acting? Does it inspire purpose and meaning? Is it technology-driven?

At The Ohio State University Max M. Fisher College of Business, our definition encapsulates those ideas — and expands on them. Here, innovation means continuously challenging ourselves to improve on what we do best so that the next generation of business leaders are equipped for professional success.

That definition is at the heart of our graduate degree offerings.

Whether you're a newly minted college graduate, someone interested in switching careers or a seasoned executive looking to grow, Fisher's portfolio of graduate business degree offerings provides all lifelong learners with opportunities to build new skills and strengthen existing ones.

Fisher programs are designed in lockstep with the recruiters, organizations and trends at the forefront of critical and emerging industries. They incorporate the hallmarks of a business education from Ohio's flagship university: hands-on, experiential learning; professional coaching and mentorship opportunities; and unparalleled career support during and after your time as a Fisher student.

Our graduate programs utilize the latest technology to provide access to online and hybrid programs and to enhance learning inside the classroom. And they're designed to leverage — for the benefit of our students — Fisher's strong partnerships with top companies and organizations throughout the U.S. and around the world.

Innovating also means knowing the marketplace, your audience and the demands competing for their time and resources. It's why our portfolio of programs include full- and part-time offerings, specialized master's degrees in key industries, and short-term, stackable certificates and micro-credentials built around cultivating topic-based and cross-functional skills.

In short, we're meeting the complexities of business with greater flexibility for our students.

Learn more about why a century's worth of professionals have turned to The Ohio State University for the business education, experiences and perspectives that have launched careers and shaped industries. Explore our portfolio of post-graduate offerings and find your fit as a member of the Fisher College of Business community!

Learn more about Fisher at fisher.osu.edu

Fisher by the numbers

600,000+
Living Ohio State Alumni

95,600+
Living Fisher Alumni



9,500+
STUDENTS

8,400+
Undergraduate

1,100+
Graduate and PhD



5 ACADEMIC BUILDINGS

1 HOTEL

1 PAVILION & TERRACE

DEDICATED NAMED FOR HOUSES

FISHER HALL

- 1998
- Max M. Fisher (BSBA '30)
- Faculty offices, administrative offices for academic departments and college units

GERLACH HALL

- 1998
- John "Bernie" Gerlach (HON '94), former trustee and chairman of The Ohio State University Foundation and a philanthropic leader in Columbus
- Graduate Programs Office, Office of Career Management and classrooms

MASON HALL

- 1999
- Raymond Mason, Jr. (BSBA '41), a decorated general in the U.S. Army
- Student computer labs, breakout rooms, Office of Global Business and research centers

PFAHL HALL

- 1999
- Dr. John K. Pfahl (MBA '49, PhD '53), former chair of the Department of Finance and faculty member
- Executive Education, the Bistro 2110 Restaurant, Simon's Lounge and Bar and conference facilities

SCHOENBAUM HALL

- 1999
- Alex Schoenbaum (BSBA '39), founder of Shoney's Restaurants, and his wife, Betty
- Undergraduate programs and classrooms

THE BLACKWELL INN AND CONFERENCE CENTER

- 2002
- Roger Blackwell, a former marketing professor who pioneered the exploration of consumer behavior
- 151 hotel rooms, banquet facilities and conference rooms

DALEY FAMILY PAVILION AND TERRACE

- 2024
- Clayton C. Daley (BSBA '51), Clayton C. Daley Jr. (MBA '74) and Clayton C. Daley III (MBA '06)
- An all-season structure and outdoor space for public and private events and educational programs



5 ACADEMIC DEPARTMENTS

6 DUAL DEGREE PROGRAMS

10 RESEARCH CENTERS OF EXCELLENCE



Our campus

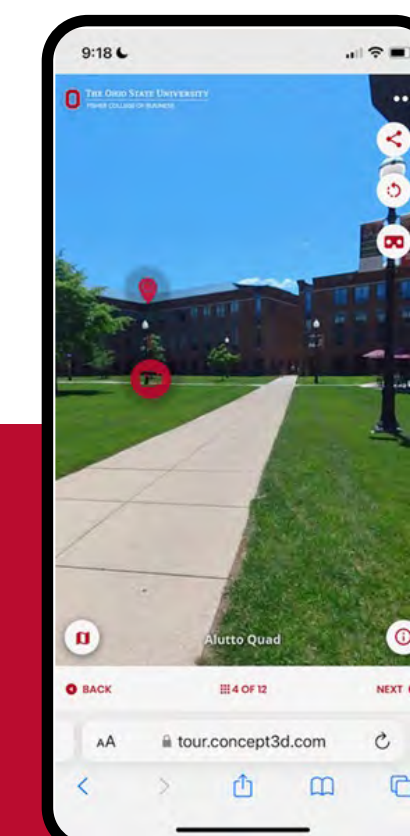
Fisher College of Business is located at the northern entrance of Ohio State's main campus, just steps away from the iconic Ohio Stadium. At the time of its construction, the six-building, 370,000 square-foot complex was the largest multi-building construction project ever undertaken by the university and it remains one of the few fully integrated management education campuses in the nation.

Fisher's campus features five academic buildings, a hotel (the Blackwell Inn and Conference Center) and support offices dedicated to student services and resources such as career management and global experiences.

Fisher's virtual tour

Explore our campus from anywhere

With numerous stops, 360-degree photos and embedded videos and photos, our virtual tour offers a great way to learn more about our campus community at your own pace.



TAKE THE TOUR

At the Center of Business: Columbus, Ohio

Columbus is a dynamic destination for those looking for opportunities to grow personally and professionally.

The city offers proximity and access to top companies and industries. Our college and university communities are located just steps from a vibrant blend of arts and culture; inspired culinary, fashion, music and entertainment scenes; exciting collegiate and professional sports; and an entrepreneurially spirited environment.



ONE OF THE
Top 15

LARGEST CITIES IN
THE COUNTRY

14th-largest U.S. city with a metro population of 2+ million, according to the *U.S. Census Bureau, 2023*

FASTEST-GROWING CITY IN THE U.S.

Bank of America Institute, 2024



27



FORTUNE 500

61

FORTUNE 1000

firms are located in Ohio

Leading companies with
**HEADQUARTERS
IN COLUMBUS**

include:

Abercrombie & Fitch Co.



Bath & Body Works®

BATTELLE



Huntington

JPMORGAN CHASE & CO.



VICTORIA'S SECRET & CO.



Top technology companies such as Intel, Google and Amazon have invested in central Ohio, elevating Columbus as a hub for innovation and growth.



Why Ohio State?

For more than 150 years, The Ohio State University has been the stage for academic achievement and a laboratory for innovation. Here are some of the reasons tomorrow's leaders are choosing to make their marks as Buckeyes:

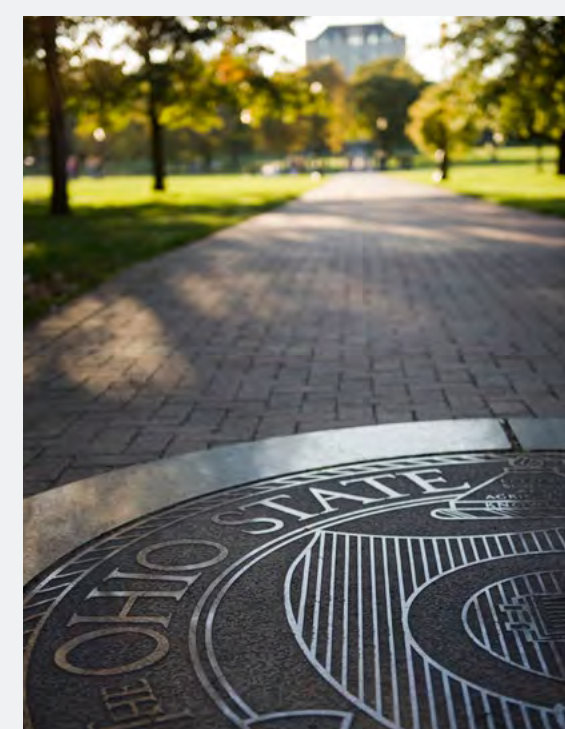
NETWORK OF ALUMNI. With more than half a million Ohio State alumni living all over the world, you'll find a network of Buckeyes no matter where you go.

CUTTING-EDGE FACILITIES. With 11 libraries, state-of-the-art recreation facilities, labs and innovation districts, our Columbus campus offers some of the top places to pursue your passions and to grow as a professional.

THE BRIGHTEST STUDENTS. Ohio State students are highly engaged, globally diverse and service-minded. We're proud that more than 14,000 graduate and professional students from over 90 countries call Ohio State home.

A COMMITMENT TO BUILDING COMMUNITY. We are dedicated to fostering growth and creating meaningful impact for all students, faculty and staff through strategic collaborations with our alumni, corporate partners and community organizations.

THE BEST FACULTY. Students benefit from working with researchers, scholars and scientists who are advancing fundamental knowledge and scholarship through their work with leading organizations regionally, nationally and globally. Ohio State's faculty includes Pulitzer Prize winners, Nobel Laureates, Guggenheim Fellows, Fulbright Scholars and Fellows of the American Association for the Advancement of Science.



Reputation and reach

U.S. News & World Report:

NO. 1 Among Ohio public universities

TOP 20 Among public universities

11 Graduate programs ranked in the top 10

Learn more
gpadmissions.osu.edu



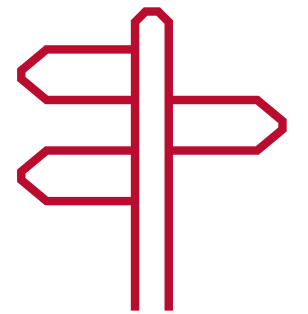
Stand out in a crowded marketplace

Offered across each of Fisher's graduate degree programs are strategic differentiators that help distinguish our alumni as among the most sought-after sources of business talent and leadership in the world.

These differentiators are natural extensions of the strengths of The Ohio State University: global reach, reputation and opportunity; an unrivaled network of alumni support; personalized services that accelerate careers; and a commitment to world-class research and thought leadership.

Expanding horizons

Fisher's relationships with global partners provide graduate students with a suite of opportunities to expand their international business perspectives and competencies through immersive experiences domestically and abroad.



Mentorship and coaching

Having one of the largest alumni networks in the world means mentorship and coaching is readily available. Connect with successful, generous leaders and begin building valuable and lasting connections that can help launch or accelerate your professional development.



Committed to career success

An Office of Career Management dedicated to serving solely Fisher students provides the one-on-one support and individualized strategies to close skills gaps, expand existing strengths and help you reach your career goals.



Outreach and research

Fisher is home to 10 research centers of excellence, including the Ohio State Center for Real Estate, Keenan Center for Entrepreneurship and the Risk Institute that provide countless opportunities for graduate students to engage with the very best thought leaders who are dedicated to exploring some of the most important industries and areas of business.



Find your fit. Begin your journey.

Take the next step today
fisher.osu.edu/graduate

	MBA PROGRAMS			SPECIALIZED MASTER'S PROGRAMS						NON-DEGREE PROGRAMS	
	FULL-TIME MBA (FTMBA)	WORKING PROFESSIONAL MBA (WP MBA)	EXECUTIVE MBA (EMBA)	MASTER OF ACCOUNTING (MACC)	MASTER OF HUMAN RESOURCE MANAGEMENT (MHRM)	MASTER OF SUPPLY CHAIN MANAGEMENT (MSCM)	SPECIALIZED MASTER IN BUSINESS - ANALYTICS (SMB-A)	SPECIALIZED MASTER IN FINANCE (SMF)	MASTER OF BUSINESS OPERATIONAL EXCELLENCE (MBOE)	GRADUATE CERTIFICATE IN IT BUSINESS STRATEGY (GCITBS)	TOPIC-BASED PROGRAMS
HOW LONG DOES THE PROGRAM TAKE?	2 YEARS	2.5 YEARS ON AVERAGE	21 MONTHS	9 MONTHS (2 SEMESTERS)	16 MONTHS (FULL-TIME) OR 3 YEARS (PART-TIME)	24 MONTHS (PART-TIME) OR FULL-TIME ACCELERATED OPTION	10 MONTHS (FULL-TIME) OR 2 YEARS (PART-TIME)	16 MONTHS (3 SEMESTERS)	13 MONTHS	10 MONTHS	2 DAYS
CAN I CONTINUE WORKING DURING THE PROGRAM?	NO	YES	YES	NO	YES	YES	YES	NO	YES	YES	YES
IS THE PROGRAM STEM-RECOGNIZED?	YES	N/A	N/A	YES	NO	N/A	YES**	YES	N/A	N/A	N/A
CAN I CUSTOMIZE MY CLASSES VIA ELECTIVES?	YES	YES	YES	YES	YES	YES	YES	YES	NO	NO	NO
HOW CAN I TAKE CLASSES? ON CAMPUS, ONLINE OR BOTH?	ON CAMPUS	ON CAMPUS, ONLINE OR BOTH	ON CAMPUS	ON CAMPUS	ON CAMPUS	ONLINE (WITH REQUIRED ON-CAMPUS EXPERIENCES)	ONLINE (100%) OR BOTH (75% ONLINE AND 25% ON CAMPUS)	ON CAMPUS	ON CAMPUS	ONLINE	ON CAMPUS OR ONLINE
WHEN ARE CLASSES?	WEEKDAYS*	WEEKDAY NIGHTS AND/ OR WEEKENDS	3 DAYS ONCE A MONTH (TH-S)	WEEKDAYS	EVENINGS (FULL-TIME: 4 PER WEEK; PART-TIME: 1-3 PER WEEK)	EVENINGS	SATURDAYS (+ SELF-PACED ONLINE)	WEEKDAYS	4 DAYS EVERY 6 WEEKS (W-S)	WEEKNIGHT EVENINGS	2 DAY PROGRAMS
WILL I RECEIVE COACHING AS PART OF THE PROGRAM?	YES	YES	YES	YES	YES	YES	YES	YES	YES	YES	NO
WHAT IS THE AVERAGE CLASSROOM SIZE?	40-60 IN CORE CLASSES; 15-25 IN ELECTIVES	60 IN CORE CLASSES; 20-25 IN ELECTIVES	25-35	60 IN CORE CLASSES; 20-25 IN ELECTIVES	50 IN CORE CLASSES; 15-25 IN ELECTIVES	30-40	50 IN CORE CLASSES; 15-25 IN ELECTIVES	45-50 IN CORE CLASSES; 15-25 IN ELECTIVES	25-35	15-25	15-25
WHEN DOES THE PROGRAM START?	AUGUST	AUGUST OR JANUARY	AUGUST	AUGUST	AUGUST (FULL-TIME); AUGUST OR JANUARY (PART-TIME)	MAY	AUGUST	AUGUST	NOVEMBER	AUGUST	VARIOUS
HOW MUCH WORK EXPERIENCE IS REQUIRED?	2+ YEARS PREFERRED	2+ YEARS	7+ YEARS	NONE	NONE	NONE	NONE	NONE	3+ YEARS	5+ YEARS	NONE

* Select electives may only be offered in evenings.

** Due to this program's format, international applications for those with or seeking an F-1 or J-1 visa are not accepted.

MBA Programs

Home to a collaboratively competitive environment, world-class faculty and a vast network of business partnerships that reaches companies and organizations across the globe, Fisher's MBA programs connect tomorrow's leaders with the skills, experiences and knowledge to get them from where they are, to where they want to go.

Explore how an MBA from Fisher can provide you with the skills necessary to succeed in crowded and complex marketplaces.

Learn more
go.osu.edu/fishermba





Full-Time MBA

Choosing to pursue an MBA is a complex decision, where long-term benefit is weighed against short-term investment.

It's a choice that should be met with intentionality and clear purpose. That expectation is at the heart of the Full-Time MBA (FTMBA) program at Fisher. The tight-knit MBA program combines the world-class instruction and experiences of a highly ranked and regarded business school with the strengths, reach and reputation of Ohio's flagship university.

Choose an MBA that's:

PERSONALIZED.

A rigorous, career-focused curriculum and coaching support prepares agile, strategic, principled leaders.

INTEGRATED.

From instructors with multidisciplinary perspectives to cross-functional learning experiences in and out of the classroom, every aspect of a Fisher MBA is intentional and integrated.

EXPERIENTIAL.

Apply classroom insights to real-world experiences through signature national and global immersive experiences.

Hands-on learning meets global and national experience

Woven throughout your MBA journey are local, national and global opportunities to apply strategy and expertise learned in the classroom to real-world challenges. These unique offerings help solidify your growth as a socially responsible, globally minded and principled business leader.

Learn more at: go.osu.edu/experiential-learning

STEM offering

The STEM MBA specialization at Fisher provides career opportunities through analytical and technical skill development. International students choosing the STEM specialization can remain in the U.S. for an additional two years of Optional Practical Training (OPT).

Learn more at: go.osu.edu/stemmba

Career and Industry Immersion Academies

Career and Industry Immersion Academies introduce MBA candidates to a variety of career pathways while preparing them for internship opportunities.

Academies facilitate:

- Clarity around personal career trajectory
- Deep knowledge of industries, roles and the skills needed to succeed
- Networking with alumni, recruiters and industry leaders
- Site visits to companies

Learn more at: go.osu.edu/academies



“The Fisher MBA has been one of the best decisions I have made in my entire life. It allowed me to sharpen the skills I learned in the military while adding new skills based in business. The friendships, networking, career services and general esteem that Ohio State is held in with large companies opened doors and opportunities for me that I never would have had otherwise.”

Jacob Halligan

Marketing Associate, Nestlé
Westerville, Ohio

Program information

Requirements: Four-year bachelor's degree or equivalent; two or more years of work experience preferred

Program Length: Two years (full-time, on-campus with a summer internship)

Program Start: Autumn (August)

Average Student Work Experience: Four years

Take the next step today
go.osu.edu/fisherftmba



Working Professional MBA

Taking the next step as a business professional shouldn't mean choosing between your career and pursuing a graduate business degree.

The Working Professional MBA (WPMBA) at Fisher provides maximum flexibility for mid-career professionals looking to advance within their organizations, change careers or pursue their entrepreneurial curiosity. Regarded as a top-10 part-time MBA program in the U.S. and #1 in Ohio, the WPMBA offers students opportunities to complete their degree **entirely online, on campus or a mix of both.**

FLEXIBLE. Set your own pace with weeknight or weekend classes to complete the program is as little as two years— or as many as six. You can even take a semester off.

EXPERIENTIAL. The WPMBA curriculum provides ways to engage with organizations near and far on real projects and case work through national and global immersive experiences.

PERSONALIZED. Nearly half of the WPMBA required credit hours are electives, providing opportunities to pursue topics of personal interest in business or across Ohio State.

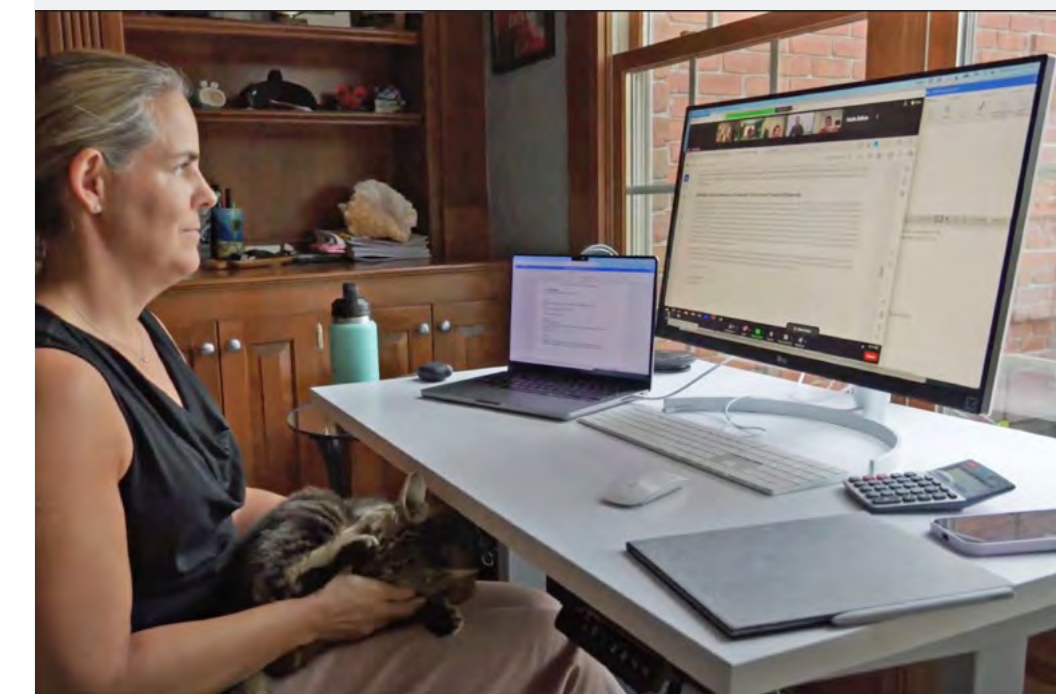
IMMERSIVE AND SUPPORTIVE. Intentionally small cohorts blend engaging classroom experiences with opportunities to build their networks through student-led organizations and off-campus site visits.

“

As a single working mother, the flexibility of the WPMBA program was vital to my success. I was able to accelerate and personalize my program while focusing on subject matter that was most relevant and interesting to me. Completing the WPMBA program at Fisher was one of the best personal and professional decisions of my life.”

Ashley Bersani

Associate Strategy Partner,
Cleveland Clinic
Columbus, Ohio



Program information

Requirements: Four-year bachelor's degree or its equivalent; Two or more years of work experience

Program Length: Self-paced (2.5 years, or 8 semesters is typical)

Program Start: Autumn (August) or Spring (January)

Average Student Work Experience: Seven years

Take the next step today
go.osu.edu/fisherwpmba



Executive MBA

Success today demands more than experience — it requires the curiosity and courage to keep evolving.

The belief that every leader, regardless of industry, role or background, needs to evolve is at the core of the Executive MBA (EMBA) program at Fisher.

For more than 25 years, experienced professionals have chosen this transformational experience to sharpen their thinking, expand their perspective and apply what they learn in real time — creating immediate value for themselves and their organizations.

STAY AHEAD OF WHAT'S NEXT

Engage with top-tier faculty who bring research-driven insights and real-world experience into every session — equipping you with the latest thinking in leadership, strategy and innovation.

ADVANCE WITHOUT PAUSE

With once-a-month, on-campus sessions and built-in flexibility, the Fisher EMBA is designed to integrate with your busy schedule — so you can advance without putting your life on hold.

SHARPEN YOUR LEADERSHIP EDGE

Gain individualized support from experienced executive coaches who challenge your thinking, sharpen your leadership style, and help you turn insight into lasting impact.

MAGNIFY YOUR GLOBAL PERSPECTIVE

Learn to lead with a worldview that recognizes the interconnectedness of marketplaces and global connections.

ADVANCE THROUGH CONNECTIONS

Realize immediate ROI as you grow in your role and tap into the vast Ohio State network, opening doors to new opportunities during the program and beyond.

FOCUS SOLELY ON LEARNING.

Concierge-style support from EMBA staff means not having to worry about enrolling in classes, buying textbooks, case study materials and meals — it's all taken care of as part of the EMBA experience.



“The EMBA program was one of the most fundamental, life-altering experiences I’ve ever had. I once thought my career path was set — but this program gave me the strategic mindset, financial knowledge and confidence to step beyond traditional clinical roles and into entrepreneurship and leadership. What I once viewed as a linear career path has transformed into an open road with limitless potential.”

Matthew Chetta, MD (EMBA '22)

Surgeon, Prisma Health
Owner, BonneVieMD
Greenville, South Carolina

Program information

Requirements: Four-year bachelor’s degree or its equivalent; at least seven years professional work experience or its equivalent

Program Length: 21 months

Application Window: September – July

Program Start: August

Average Student Work Experience: 17 years

Take the next step today
go.osu.edu/fisheremba



Specialized Programs

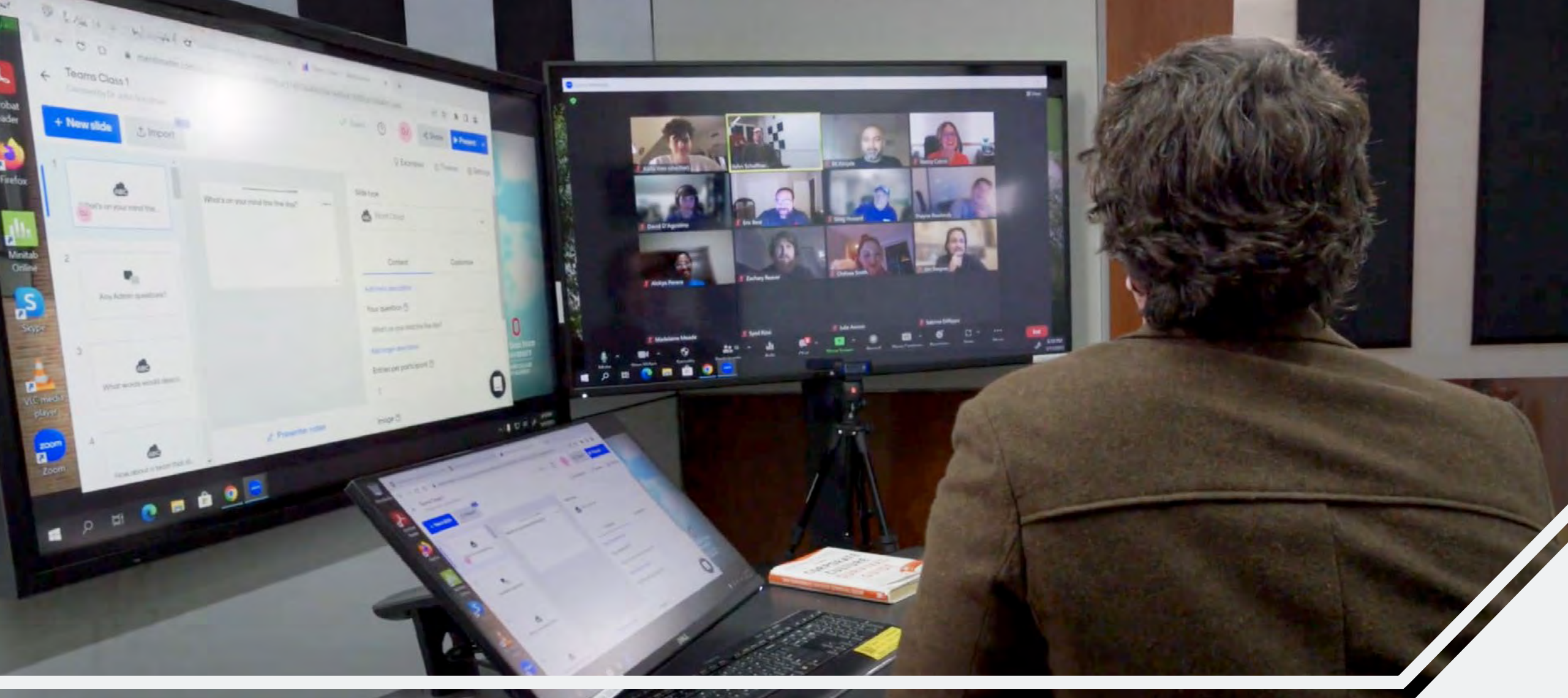
Fisher's specialized graduate programs develop leaders with the technical skills to excel in contemporary, focused areas of business.

These programs leverage the proven strengths of business education at Ohio's flagship university – innovative curriculum, world-class faculty and a vast network of partnerships that reach from the surrounding business community to multinationals, nonprofits and startups across the globe.

The opportunities, connections and brand recognition made possible by the graduate student experience are unmatched at Ohio State, one of the nation's largest research universities with 580,000 alumni in more than 150 countries.

Learn more

go.osu.edu/specialized-programs



Specialized Master in Business – Analytics

As companies and industries grow more reliant on the use of data to inform decisions and drive results, there's a need for professionals who understand the science of data analytics and its impact on business innovation, productivity and growth.

The Specialized Master in Business-Analytics (SMB-A) at Fisher is a fast-paced experience that reflects today's intersection of technology, business and descriptive, predictive and prescriptive analytics.

ONLINE FLEXIBILITY.

A mix of self-paced and live content accommodates busy professional schedules. Complete each class 75 percent online and the remaining 25 percent via in-person Saturday classes or live-streaming from anywhere.*

**Except under unique circumstances, the streaming option is only available to students living 50+ miles away from Ohio State's main campus.*

SYSTEMS THINKING, R-FOCUSED.

Learn the language of data by utilizing programs such as R, R-studio, Python, SQL, MS Office, PuTTY and Tableau to develop the analysis skills and systems thinking that top employers seek.

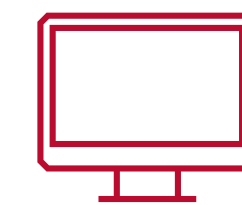
REAL-WORLD ANALYTICS MANAGEMENT CAPSTONE.

Learn to lead an analytics team through a hands-on capstone project that utilizes real data.

What students and employers can expect:



The SMB-A program welcomes all experience levels and statistical computing knowledge.



The SMB-A's virtual lab provides access to cutting-edge technical applications for computational and statistical processing of data and advanced options in visualization.



Network and engage with analytics professionals throughout the curriculum, a capstone project, and the program's specialized guest speaker series.



The SMB-A program was one of the best decisions I've made in my career, both for professional and personal growth. The degree led to me being able to take the next step in my career as a data scientist. Personally, the program challenged me to think and work harder than I had before, resulting in learnings and skills I use to this day and will use for many years going forward."

Josh Mark
Central Innovation Developer,
Apple
Austin, Texas



Program information

Requirements: Four-year bachelor's degree or its equivalent

Program Length: 10 months (full-time); two years (part-time)

Program Start: Autumn (August)

Average Student Work Experience: Seven years (not required but valued)

Take the next step today
go.osu.edu/fishersmb-a

Master of Supply Chain Management

Supply chains are the lifeblood of business, connecting industries, transforming ideas into products and sustaining marketplaces.

Built on Ohio State's pedigree as a supply chain leader, the Master of Supply Chain Management (MSCM) at Fisher features a flexible curriculum that combines online coursework with hands-on learning experiences. The result is an experience that equips a new generation of supply chain professionals to understand, assess and excel in logistics, operations and procurement.

A LEGACY OF EXCELLENCE.

Explore technology, resilience, sustainability, consumer-centricity and analytics with the world-class scholars who have established Fisher as a global leader in supply chain education.



ONLINE FLEXIBILITY.

Synchronous (live) and asynchronous (self-paced) online instruction from premier supply chain faculty accommodate the busiest of schedules.

ONLINE MEETS HANDS-ON.

Opportunities for hands-on learning include a capstone project that benefits a real organization, two on-campus experiences, workshops, group projects, site visits, executive speakers and in-person networking.



MEET INDUSTRY LEADERS.

Faculty connections provide MSCM students with opportunities to engage with industry leaders from leading companies, including Amazon, Honda, DHL and JPMorgan Chase.



“

Supply chain as a field is clearly growing in prominence and importance, and Ohio State's Fisher College of Business has long been an elite program in the space. The online MSCM degree attracts diverse cohorts of practicing learners, offering them a critical opportunity to build meaningful connections with their peers and with Fisher's world-renowned supply chain faculty.”

John Gray
Professor of Operations,
Co-Academic director, MSCM



Program information

Requirements: Four-year bachelor's degree or its equivalent

Program Length: 24 months (part-time); Accelerated full-time option available.

Program Start: Summer (May)

Average Student Work Experience: Seven years (not required but valued)

Take the next step today
go.osu.edu/fishermscm



Master of Accounting

A century's worth of excellence in business education doesn't happen without being able to speak, teach and interpret the language of business.

Directed by one of the premier academic departments in the world, the Master of Accounting (MAcc) program at Fisher offers an educational experience that is personalized, hands-on and tailored to meet the needs of today's accounting professionals. The MAcc program is a recognized leader in this foundational industry.

DESIGN YOUR DEGREE. More than 78 percent of the MAcc coursework consists of electives, providing students with opportunities to blend their educational experiences with interests in areas such as auditing, data analytics, taxation, financial reporting, managerial decision making, finance and operations, among others.

STEM-DESIGNATED DEGREE. Fisher's MAcc program is one of the first in the U.S. to earn a STEM designation, allowing international students to remain in the U.S. for an additional two years of Optional Practical Training (OPT).

PROFESSIONAL CERTIFICATION. The program supports multiple pathways to CPA licensure. In Ohio, it is an approved route to becoming a CPA. For other states, it provides the academic rigor and credit hours typically required to meet the 150-hour rule.

A DIVERSE LEARNING ENVIRONMENT. Approximately 15 percent of each MAcc cohort enrolls without an undergraduate accounting degree. To support these students, Fisher offers a pre-MAcc accounting bootcamp that provides the foundational knowledge needed to succeed in the program and pursue CPA licensure.

What students and employers can expect:

In addition to the skills necessary to communicate and thrive as part of teams within an organization, MAcc graduates are equipped with data and analytics skills to acquire, prepare and analyze large-scale data sets in accounting and finance to drive meaningful business action.



MAcc students will understand the structure of academic research papers, how to best navigate them and how to view accounting and auditing through the lens of academic research.



Graduates will be able to conduct professional research in financial accounting and tax.



“

Completing the MAcc program was one of the best experiences in my life. The program provided me the opportunity to take challenging courses in the field of accounting but also allowed me to take other electives that I was interested in, such as the Business of College Sports and Negotiations. I am proud to call myself an alumnus of the MAcc program and greatly value my time as a Buckeye!”

Julio Stevens
Senior Digital Assurance & Transparency Associate, PwC
Columbus, Ohio



Program information

Requirements: Prior accounting courses*

Program Length: Nine months

Program Start: Autumn (August)

Average Student Work Experience:
Less than one year

* A Pre-MAcc program is available at Fisher for students who are new to accounting.

Take the next step today
go.osu.edu/fishermacc



Master of Human Resource Management

An ever-changing workplace demands leaders who are equipped to embrace disruption, champion strategic initiatives and embody the principles that advance businesses, their missions and their employees.

As a recognized leader in human resources and management education, Fisher's Master of Human Resource Management (MHRM) program equips professionals to embrace three key drivers of change within HR and human capital: the future of the enterprise, the future of the workforce and the future of work.

BUSINESS-FOCUSED. Ohio State's MHRM program is part of the highly ranked Fisher College of Business and is SHRM-accredited.

FULL-TIME OR PART-TIME OPTIONS. Complete the program full-time in as little as 18 months with a summer internship, or in 36 months on a part-time basis.

OPEN TO ALL. The MHRM program attracts a diverse array of students, including recent undergraduates to established professionals who are looking to grow or change fields.

What students and employers can expect:

- HR learnings from generalist and specialist perspectives.
- In-demand skills, including how to use artificial intelligence (AI) as a work accelerant, and data analytics, visualization and storytelling to influence change within an organization.
- Leadership development to equip students with the advanced skills necessary to be successful in dynamic environments.
- An individually created development plan, complemented by an alumni mentor, that cultivates a unique and authentic leadership style.
- An expanded network of HR professionals including an active advisory board that facilitates recruitment and informs curriculum.



The MHRM curriculum is intentionally designed to include individual and group projects to build capabilities in leadership and business and functional acumen. Students of the program come to employers prepared to work horizontally, deliver effective communication and generate diverse thoughts and knowledge of HR policies and strategies.”

Lauren Von Sossan
Senior Human Resources
Business Partner,
Owens Corning
Toledo, Ohio



Program information

Requirements: Four-year bachelor's degree or its equivalent

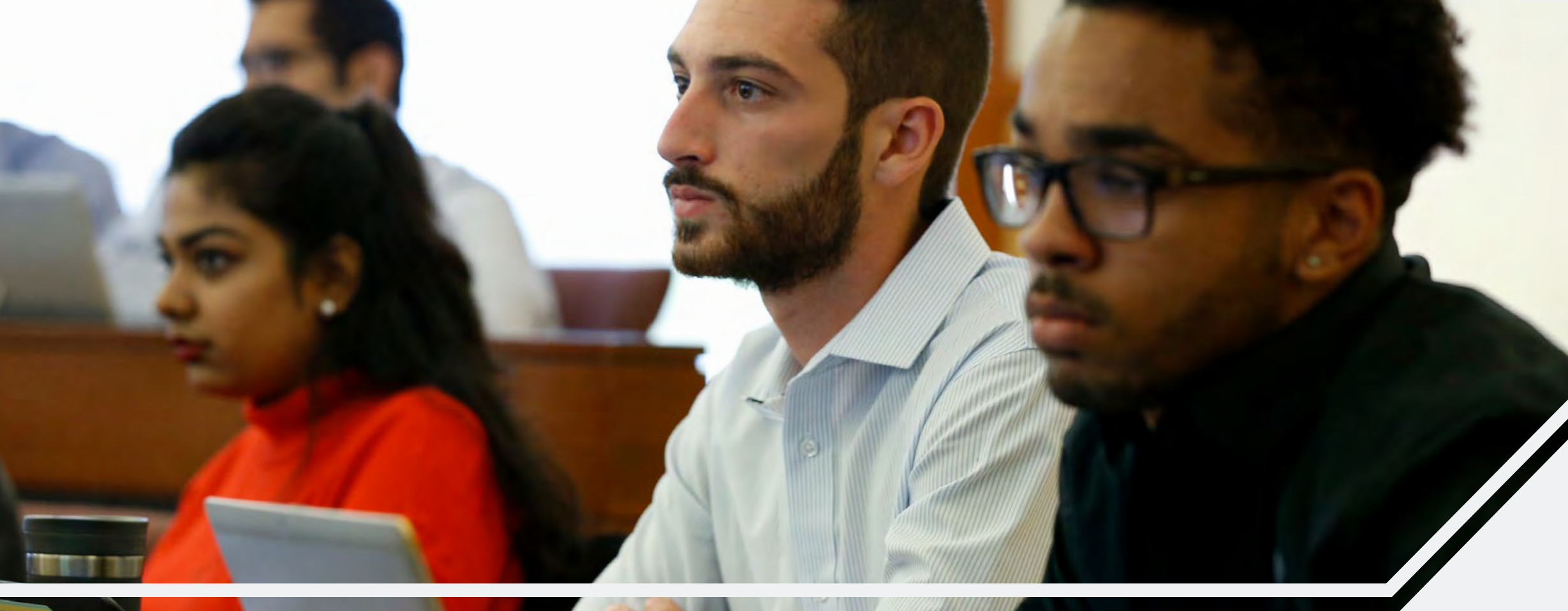
Program Length: Three semesters (16 months) for full-time students; Six semesters (three years) for part-time students

Program Start:
Autumn (August): full- or part-time students (most common)

Spring (January): For part-time students only (less common)

Average Student Work Experience:
Three years (none required)

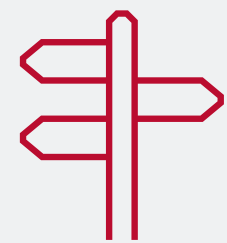
Take the next step today
go.osu.edu/fishermhrm



Specialized Master in Finance

There's knowing how finance works — and there's mastering it.

The Specialized Master in Finance (SMF) provides tomorrow's finance leaders with the skills, tools and experiences to excel in the ever-changing industry.



SELECT YOUR PATHWAY. Choose a development plan focused on four specialized pathways — Corporate Finance/Investment Banking, Investment Management, Risk Management and Insurance, or Real Estate.



SUMMER INTERNSHIP. Gain crucial hands-on finance experience through summer internships with top companies.



OPEN TO ALL. The SMF program is a diverse, global degree welcoming students from a wide range of undergraduate majors.



CUSTOMIZATION AND CERTIFICATION. Personalize your SMF curriculum to meet specific career goals, including pursuing professional designations such as Chartered Financial Analyst (CFA), Financial Risk Manager (FRM) or Chartered Alternative Investment Analyst (CAIA).

What students and employers can expect:

- Build in-depth foundational finance knowledge through core coursework, internships, business challenges, mini projects, professional development, advanced financial software, modeling (Python/Data) and analysis.
- Course projects, case competitions and engagement with finance professionals provide SMF graduates opportunities to apply technical and soft skills.
- Real-world financial experience through faculty-guided specialty electives.
- Opportunities to build a network of finance professionals and SMF alumni through a speaker series, mentorship and customized immersion experiences.
- Professional development workshops and opportunities to think and work cross-functionally inside and outside the classroom drive leadership growth.



The SMF program was instrumental in my career. The rigorous and customizable curriculum provided a strong financial foundation and equipped me with essential technical and soft career skills. The program facilitated networking opportunities with top finance companies, provided numerous insights and career opportunities, and strengthened my personal and professional development through workshops, seminars and career services.”

Nadia Morelos
Strategic Finance,
Northern Trust Corporatio
Chicago, IL



Program information

Requirements: Four-year bachelor's degree or its equivalent

Program Length: Three semesters (16 months)

Program Start: Autumn (August)

Average Student Work Experience: Less than one year (none required)

Take the next step today
go.osu.edu/fishersmf

Master of Business Operational Excellence

What does it take to lead with clarity and confidence — not just through complexity and change, but into a future that demands smarter systems, faster decisions and leadership that makes a real difference?

The Master of Business Operational Excellence (MBOE) program at Fisher is built for professionals who want to lead meaningful, lasting change. Whether you're new to improvement strategies or are already guiding teams through transformation, this program offers a modern, applied approach grounded in the latest research and real-time learning. Over 13 months, you'll develop the skills to solve complex problems, improve systems and drive measurable results, all while applying what you learn directly to challenges in your own organization. With expert faculty, experienced executive coaches and a diverse network of peers, you'll gain the tools and confidence to make an immediate impact and prepare for what's next in your career.



BUILD STRONGER SYSTEMS

Learn how to improve the way work gets done with practical tools that help you solve problems, strengthen processes and deliver better outcomes.

GROW WITH EXPERT GUIDANCE

Work one-on-one with an experienced coach and learn alongside faculty, peers and alumni who are committed to your growth and impact.

LEARN FROM THE EXPERTS

Fisher's nationally recognized operations faculty bring cutting-edge research and real-world experience into the classroom to prepare you for today's most complex challenges.

MAXIMIZE YOUR INVESTMENT

Set yourself apart with a program designed to strengthen your problem-solving, leadership and systems-thinking, and prepare you to lead at the next level.

ADVANCE WITHOUT STEPPING AWAY

With monthly, on-campus sessions and a flexible format, you can keep making an impact at work while preparing for what's next.

FOCUS ON LEARNING, NOT LOGISTICS

Concierge-style support helps you manage materials and scheduling so you can stay focused on growing as a leader.



“The MBOE program gave me the frameworks and the confidence to lead at the highest level. Whether it’s operational challenges or strategic company initiatives, the tools and knowledge I gained are something I rely on every day.”

Julia Sebastian (MBOE '21)

EVP Operations
The Shipyard
Columbus, Ohio

Program information

Requirements: Four-year bachelor's degree or equivalent; at least three years professional work experience or equivalent

Program Length: Eight four-day sessions spread across 13 months

Application Window: January - November

Program Start: November

Average Student Work Experience: 19 years

Take the next step today
go.osu.edu/fishermboe

Non-Degree Offerings

Topic-Based Programs

These à la carte offerings provide ambitious professionals and lifelong learners with opportunities to augment their knowledge with deeper dives into areas of business demanded by the workforce, marketplace and individual organizations.

Offered through Fisher's prestigious Executive Education department, topic-based programs provide valuable and convenient learning opportunities without the long-term commitment of a degree program.

CONVENIENT

Completed in two to three days, Fisher's on-campus and virtual topic-based programs combine contemporary research with practical applications.

IMMERSIVE

Faculty instruction and facilitation is complemented by guest corporate speakers, proven practitioners in the topic-area, immersive experiences such as company site visits, group projects and other activities, including tours of Ohio State facilities and Ohio Stadium.

Certificate Programs

Certificates are convenient ways to achieve training in specific areas of focus and help you earn credit hours that can be applied toward the Working Professional MBA at Fisher College of Business.

DESIGNED TO AID CAREER GROWTH

Core curriculum is market-driven and designed to prepare you for career advancement.

REAL-WORLD APPLICATION

Teaching is immediately applicable to real-time business problems in your workplace through project work.

JUST IN TIME

Examples of topic-based programs include, but are not limited to:

- Artificial Intelligence
- Communications
- Data Analytics
- Financial Intelligence
- IT Business Strategy
- Leadership and Negotiation
- Management Skills
- Operational Excellence
- Pricing Strategies
- Product Marketing
- Supply Chain

EXAMPLES OF CERTIFICATE PROGRAMS

- Mini-MBA Graduate Health Care Certificate
- Fintech micro credential

go.osu.edu/FisherEEPrograms

“

Success in business relies upon being flexible, credible and in touch with marketplace needs – all of which are hallmarks of non-degree programs at Fisher.”

Custom Corporate Programs

Custom corporate programs are tailored to meet the specific needs or challenges of organizations and create think-tank environments within the companies that increase individual and organizational success.

UNIQUE PROGRAM DESIGN

Program format and topics taught within each custom corporate program are determined during our program design process where an organization or industry's development needs and goals are assessed.

FACULTY EXPERTISE

Taught by world-class Fisher faculty, participants in custom corporate programs will learn from leaders in their respective areas of business.

EXAMPLES OF CUSTOM CORPORATE PROGRAMS

- Advanced Drainage Systems Marketing Excellence Program
- The Ohio State University Wexner Medical Center Lean Six Sigma Green Belt Program

Take the next step today

go.osu.edu/FisherCustom



Program impact

5,000+
PROFESSIONALS

from

200+
ORGANIZATIONS

around the world have turned to Fisher for innovative, continuing education programs, faculty expertise and consulting, and center-led research insights since 2022.



The Ohio State University Fisher College of Business

📍 2100 Neil Ave
Columbus, OH 43210

🌐 fisher.osu.edu

**Find your fit.
Begin your journey.**

🌐 **Schedule a chat.**



THE OHIO STATE UNIVERSITY
FISHER COLLEGE OF BUSINESS

Fisher Graduate Programs

Select service

- Online Master's (Analytics, MBA, Supply Chain) 30 minutes
- Full-Time MBA 30 minutes
- Working Professional MBA (Part-Time) 30 minutes
- Specialized Masters (HR, Finance, Accounting) 30 minutes
- Master of Business Operational Excellence 30 minutes
- Executive MBA 30 minutes
- Graduate Certificate in IT Business Strategy 30 minutes
- Open Enrollment Offerings 30 minutes

Select time

